

Connecting to the Online E-Catalog

BenBilt Remodeler

The online E-Catalog can be accessed in a variety of ways. The method you choose will depend upon the computer and operating system you use to connect. Following is an explanation of the various options available for launching the E-Catalog and general information on when you might want to use an option.

E-Catalog Auto Launcher

Most users will want to use the E-Catalog Auto Launcher. The E-Catalog Auto Launcher can be downloaded and installed from:

<http://millworkdevelopment.com/benbilt/remodeler/setuprdp.exe>

Auto Launcher will work for any computer with Windows 8 (or later) or a computer with Windows 7 that has been kept current with the recommended Windows Updates. Links to the required Windows 7 updates are available and will be displayed to users if they have an issue when first launching the application.

Auto Launcher will probably not work for users with Windows XP or Windows Vista. If a user had kept up-to-date with Windows updates they may be able to use the Auto Launcher. The required updates for these systems are no longer available.

E-Catalog Quick Access

Certain users may not be able to download or install either of the desktop launching applications. The user's computer may have restrictions on downloads, installations or the use of Remote Desktop Programs (RDP). In this case, users can launch the E-Catalog directly from their browser using E-Catalog Quick Access. E-Catalog Quick Access can be launched from the following URL:

<http://remodeler.ecat-online.com>

The Quick Access program has certain limitations when compared to the other versions. Since the users are connecting via a web page and not through the Remote Desktop protocol, they will not have access to their hard drives or printers. When the user prints, a PDF file is downloaded to their computer. The user must then open and print or email the downloaded PDF. The Quick Access version is not recommended for mobile devices as the on-board keyboard support is currently under development.

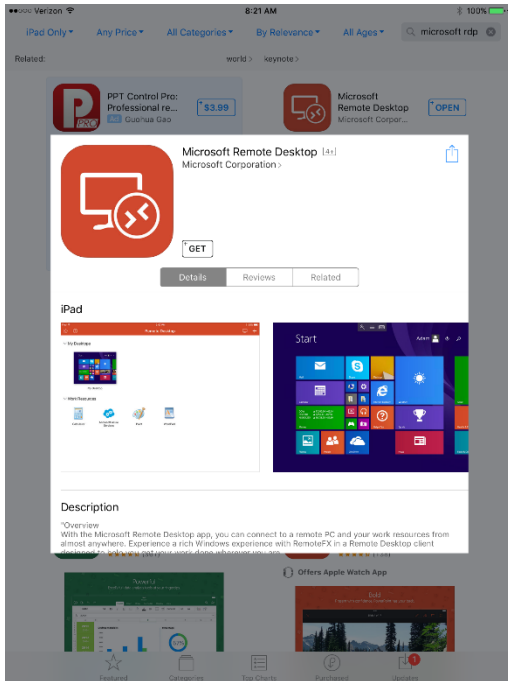
E-Catalog Mobile

Users wanting to connect from mobile devices (Apple iPhones/iPads and Android Phones/Tablets) should use an RDP client. We recommend Microsoft Remote Desktop. Microsoft Remote Desktop is a free client application that is available for most mobile devices and works well. An RDP client should also be used when connecting from an Apple or Linux desktop machine. Microsoft Remote Desktop is available for Macs. Linux users should use Rdesktop or FreeRDP.

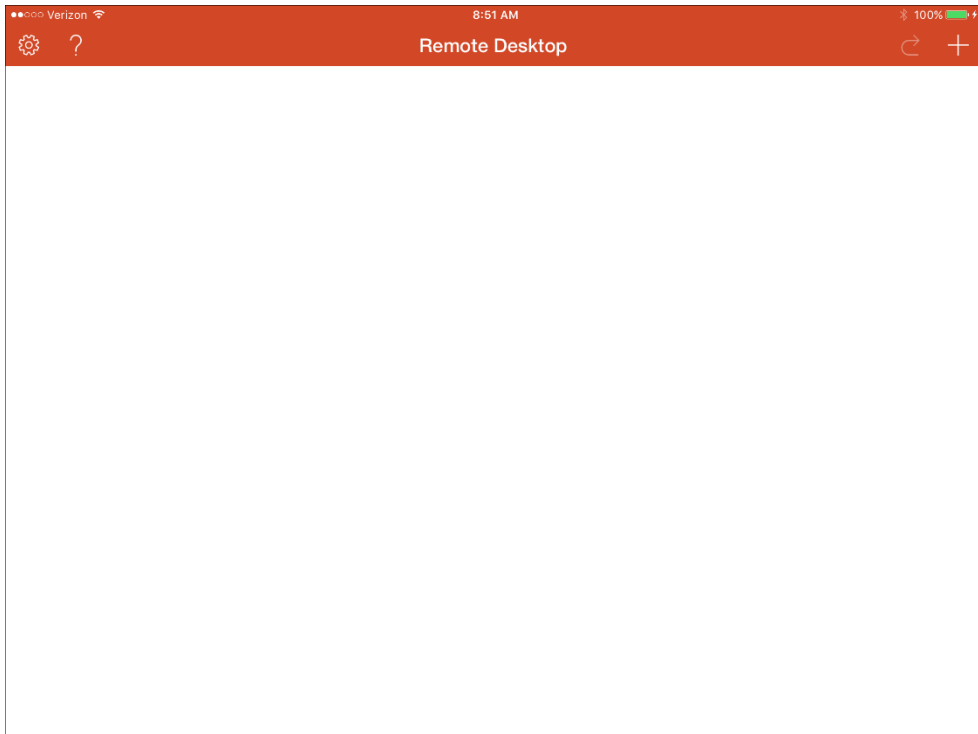
Microsoft Remote Desktop Installation and Setup

Users should install the application on their device and setup the connection as shown in the images following. Depending upon the device and operating system the setup page may have a slightly different appearance.

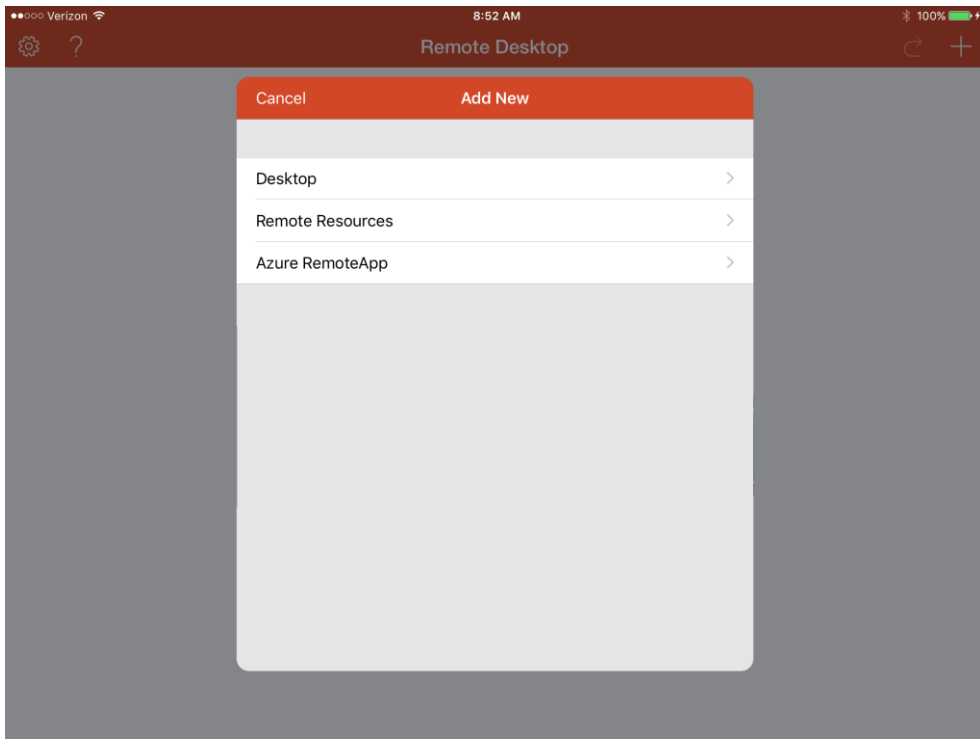
Install Microsoft Remote Desktop from the App Store.



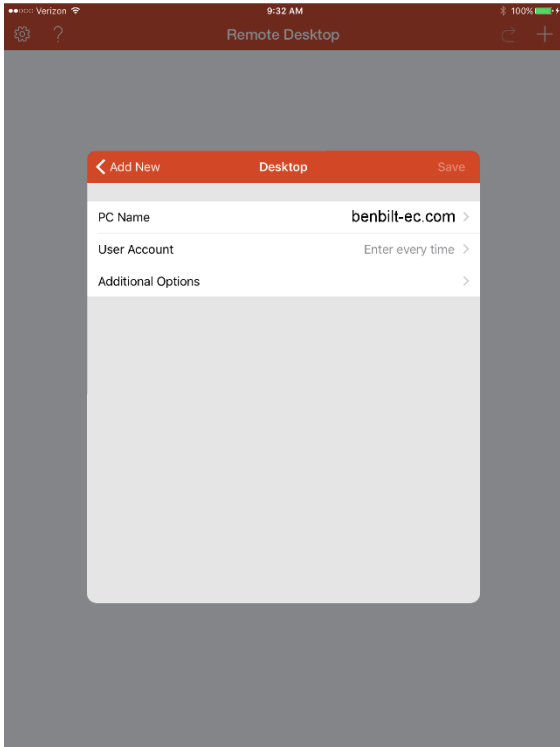
Launch the app and select the + button on top toolbar to configure a new Remote Desktop.



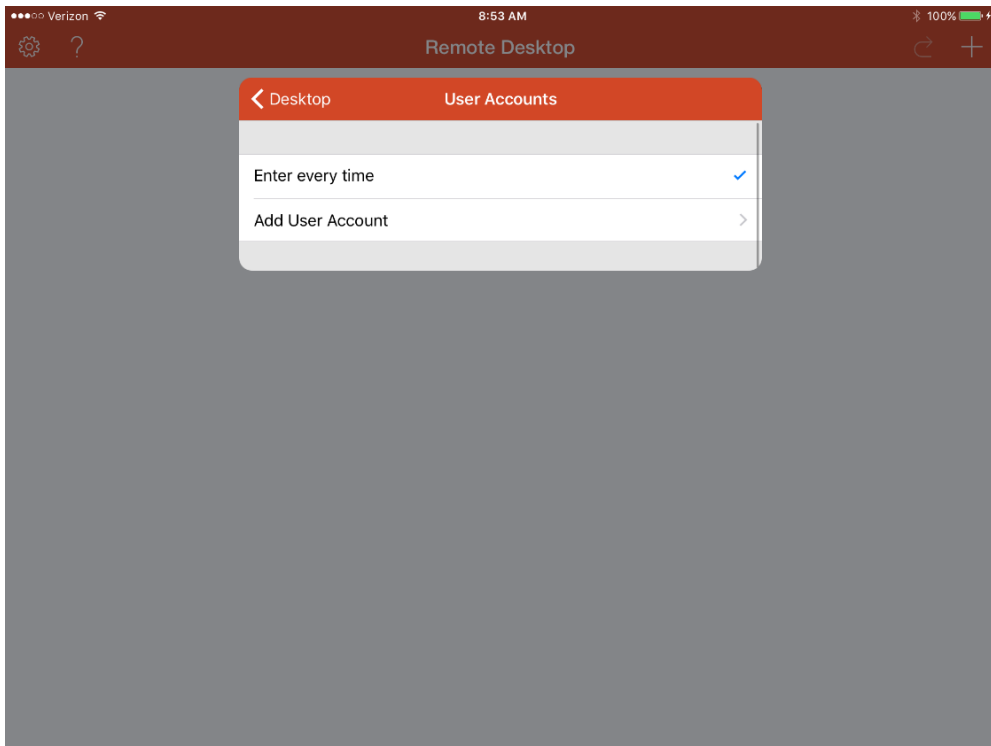
Select Desktop



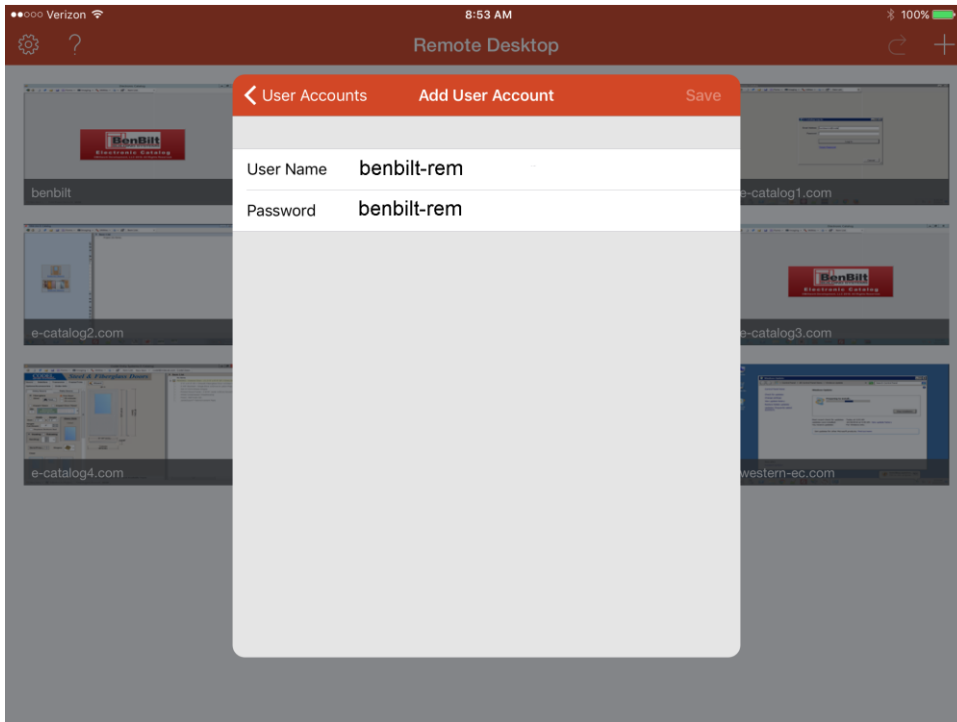
Enter 'benbilt-ec.com' in the PC Name Field and select User Account.



Select Add User Account.



Enter 'benbilt-rem' in the User Name field and 'benbilt-rem' in the Password field and hit Save. Return to the Main form and launch the E-Catalog.



Appendix E-Catalog Version Comparison

	Retains													
	Server		E-Catalog		Compatible With									
					Requires				Chrome-					
	UserName	Password	UserName	Password	Priviledges	Installation	Windows XP	Windows Vista	Windows 7	Windows 8 and later	Mac OS	book	Linux	Mobile
Auto Launcher	X	X	X	X	X				1	X	X			
RDP Launcher	2	2			X		X	X	X	X	X			
Quick Access							X	X	X	X	X	X	X	X
Mobile 3	X	X									X	X	X	X
	Notes:													
	1 Requires that Windows 7 has received all the required Windows Updates.													
	2 The user must select the option to Remember Credentials when first logging onto the E-Catalog Server.													
	3 Using Microsoft Remote Desktop or other RDP Client													